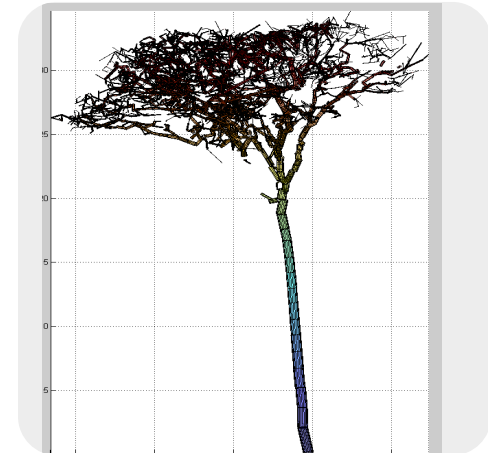
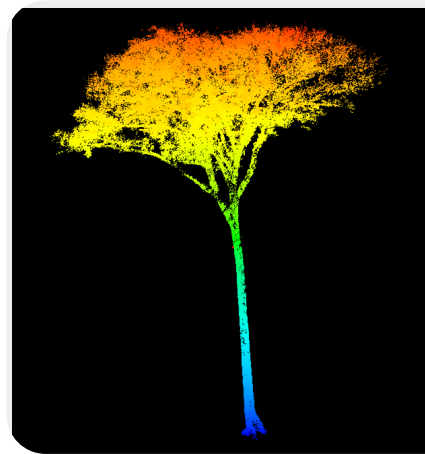


# ESA Living Planet Symposium. Prague. 2016

## Additional material Poster: "Quantification of Tropical Forest Biomass with Terrestrial LiDAR and 3D Tree Quantitative Structure Modelling"

Jose Gonzalez de Tanago<sup>1,2</sup>, Alvaro Lau Sarmiento<sup>1,2</sup>, Harm Bartholomeus<sup>1</sup>, Martin Herold<sup>1</sup>, Pasi Raunonen<sup>3</sup>, Valerio Avitabile<sup>1</sup>, Christopher Martius<sup>2</sup>, Shijo Joseph<sup>2</sup>

jose.tanago@wur.nl



**WAGENINGEN UR**  
For quality of life



<sup>1</sup> Wageningen University. <sup>2</sup> CIFOR.

<sup>3</sup> Tampere University of Technology

# Introduction.

## Measuring AGB of Tropical Forest

- Difficult to access and expensive to directly measure large trees AGB (destructive sampling)
- Current methods to estimate AGB in tropical forests based on **indirect estimations**:
  - generally based on **allometric equations**
  - can be very effective when applied within the species and productivity range of the **calibration data**
  - may lead to **large uncertainties** in broad scale biomass mapping



# Objectives.

1. Infer tree wood volume directly from tree 3D models derived from TLS data. Derive AGB based on specific wood density
2. Compare with destructive detailed in-situ measurements of wood volume after harvest
3. Evaluate the capability of the tree reconstruction method to deal with very high occlusion and irregular shape trees (buttresses)



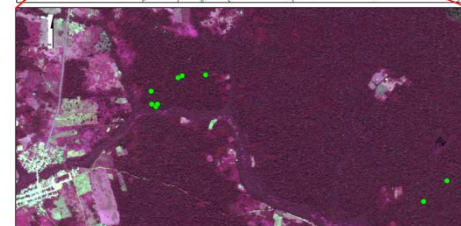
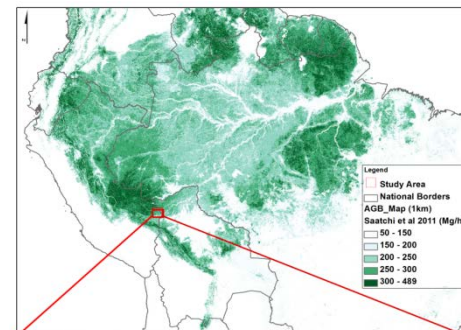


# Experiment set-up.

- Selective logging in tropical forest in Peru, Guyana, and Indonesia
- 29 Plots (30x40 and 30x50m), around a major tree to be harvested
- 29 Harvested Trees: Height: 30 - 50 m; Diameter: 40 - 128 cm; AGB: 4 - 31 Mg

In this additional material:

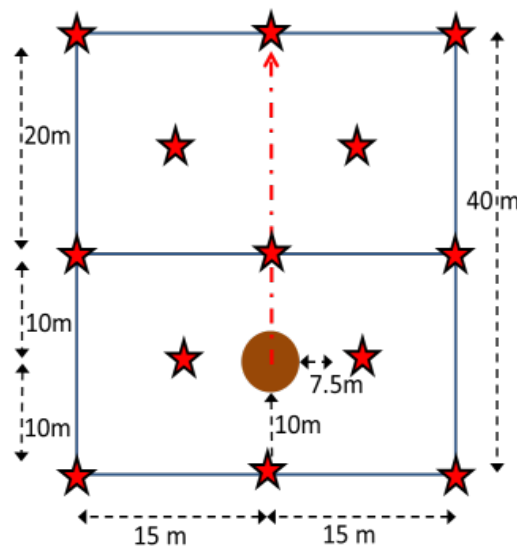
- Preliminary results from Peruvian Amazon Site
- 9 very large trees from 5 different species harvested



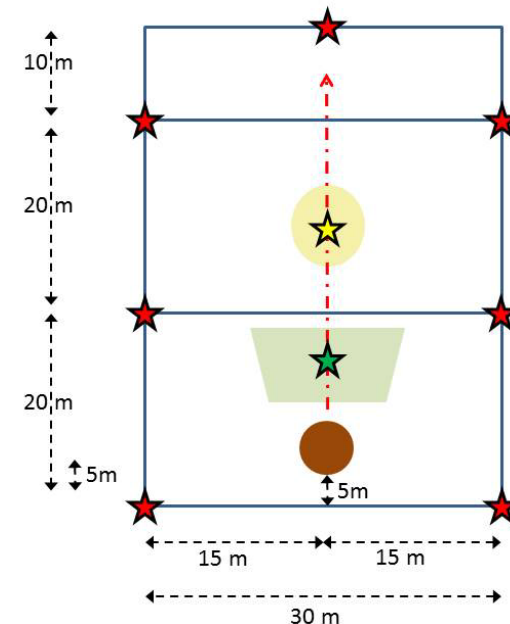
# TLS data acquisition.

- Riegl VZ 400, Angular Resolution 0.06 degrees,
- Systematic Spatial Pattern: 8-13 scan positions / plot
- Spatial TLS sampling design:

Indonesia & Guyana (2014)



Peru (2013)



# Validation Data. Field measurements

## ■ Pre-harvest

- DBH of Trees, palms, and lianas with  $D \geq 10$  cm
- Alive status, X,Y, Family/Genus/species, decay class (dead)
- Crop tree: Htot, Hstem, Crown width

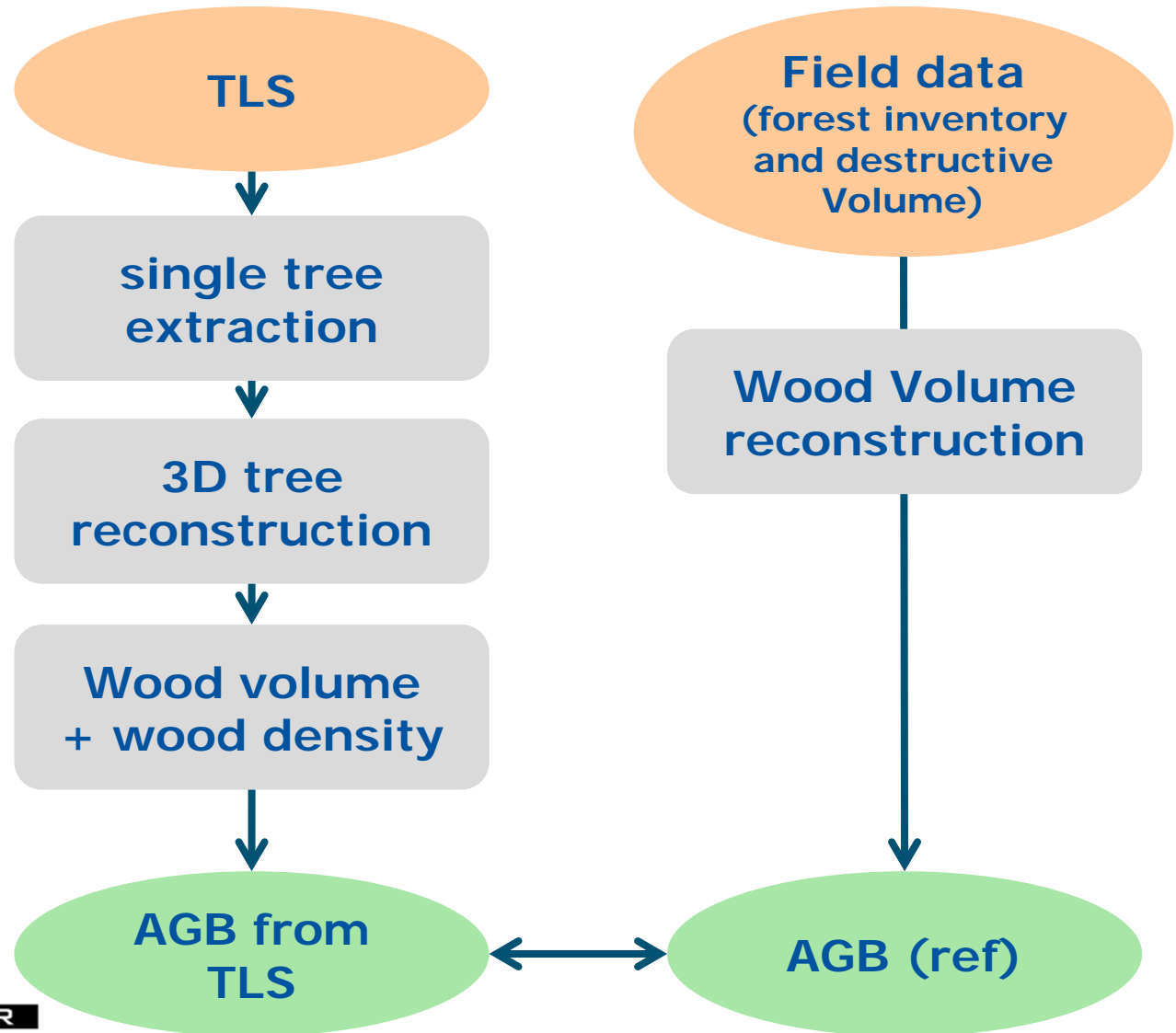
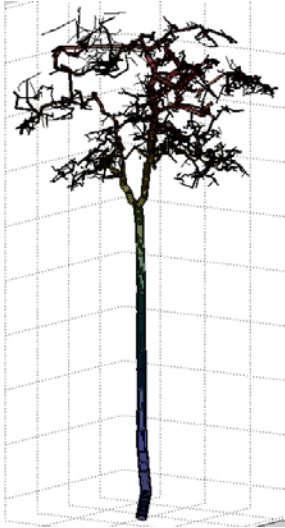
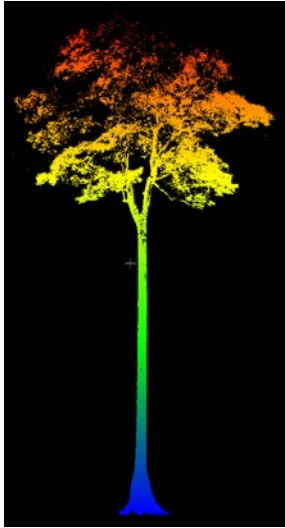


## ■ Post-Harvest

- Stump height, Dimensions: buttresses, stem ( $D$  every 1m), branches ( $D \geq 10$ cm)



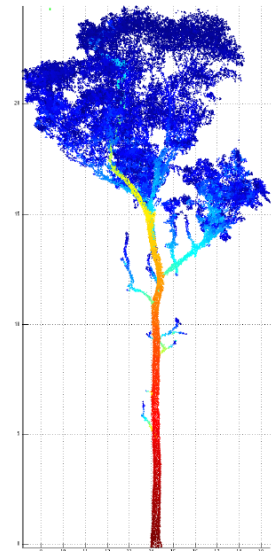
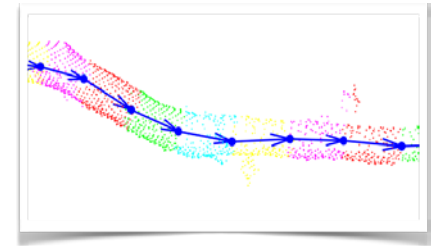
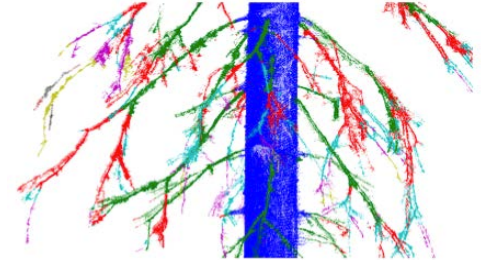
# Methods.





# Methods. QSM 3D tree reconstruction

- Raumonon et al. (2013):
  - Input = individual tree point cloud
  - Output = cylinder model of the tree structure
  - Reconstruction method:
    - i. Segmentation (and topology, axes)
    - ii. Surface reconstruction (cylinder fitting)
- No prior assumptions of tree structure
- Direct calculation of tree wood volume
- Also triangulated surface model for base of stem (Raumonon et al. 2013 and Åkerblom et al. 2014)



Raumonon, et al. (2013). Fast Automatic Precision Tree Models from Terrestrial Laser Scanner Data. *Remote Sensing*, 5, 491-520

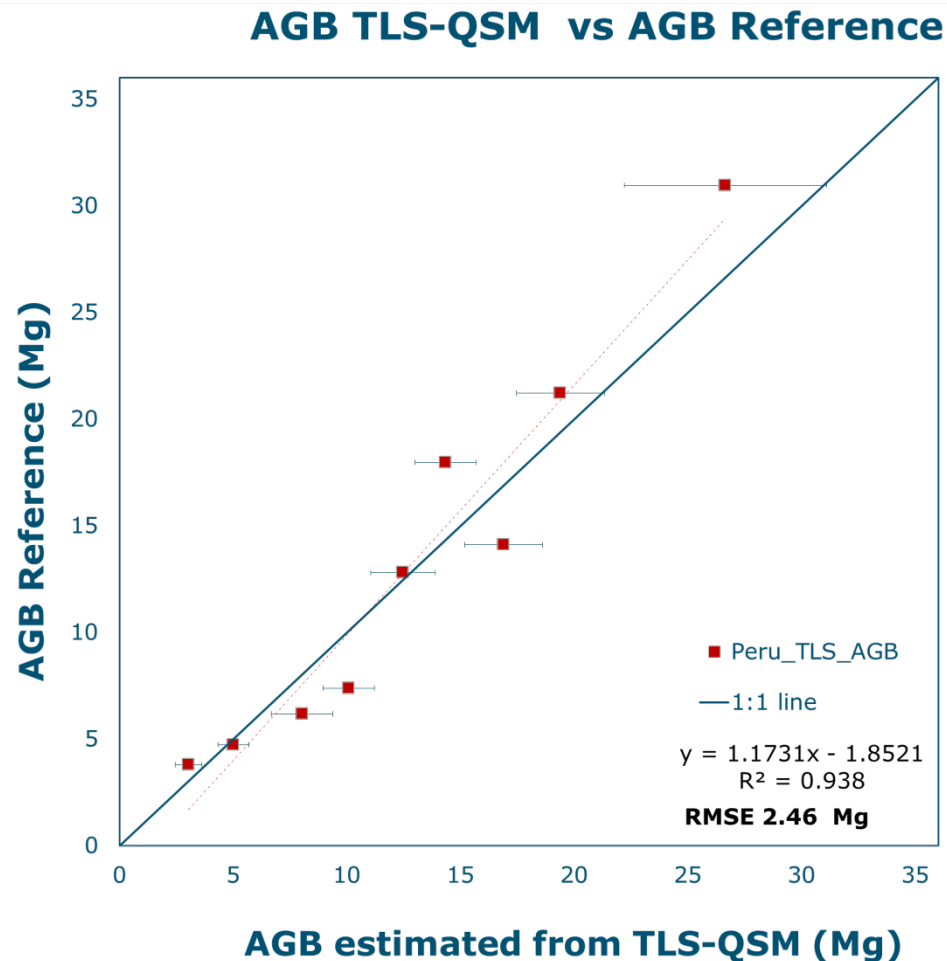
Åkerblom et al. (2014) "Analysis of geometric primitives in quantitative structure models of tree stems" *Remote Sensing*,





# Preliminary Results.

## TLS-QSM for tropical biomass estimation

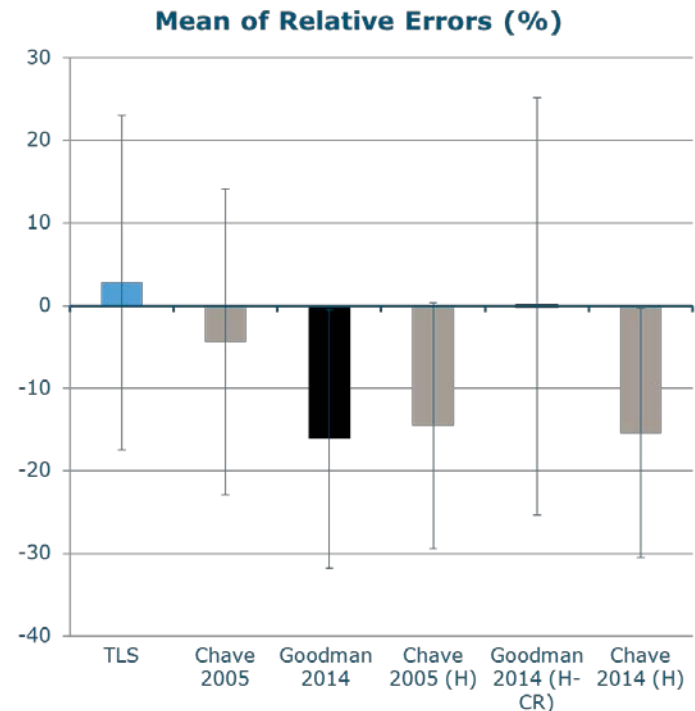
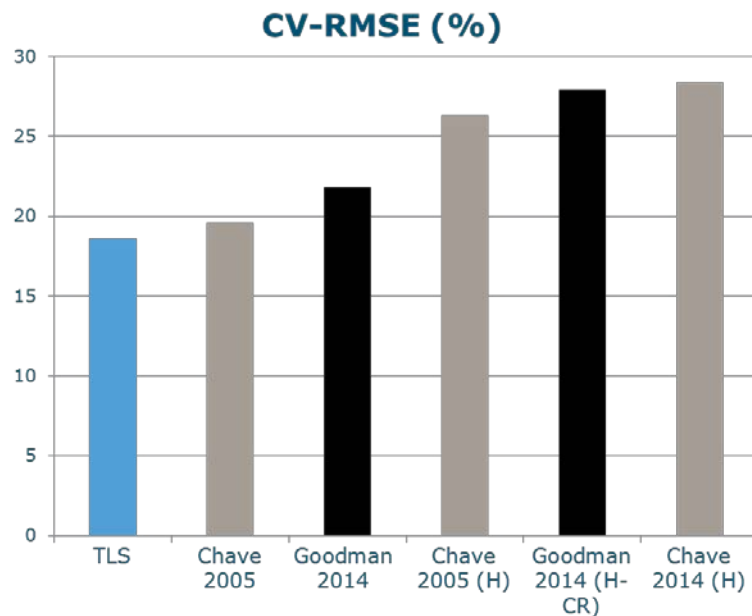


# Preliminary Results.

## TLS–QSM for tropical biomass estimation

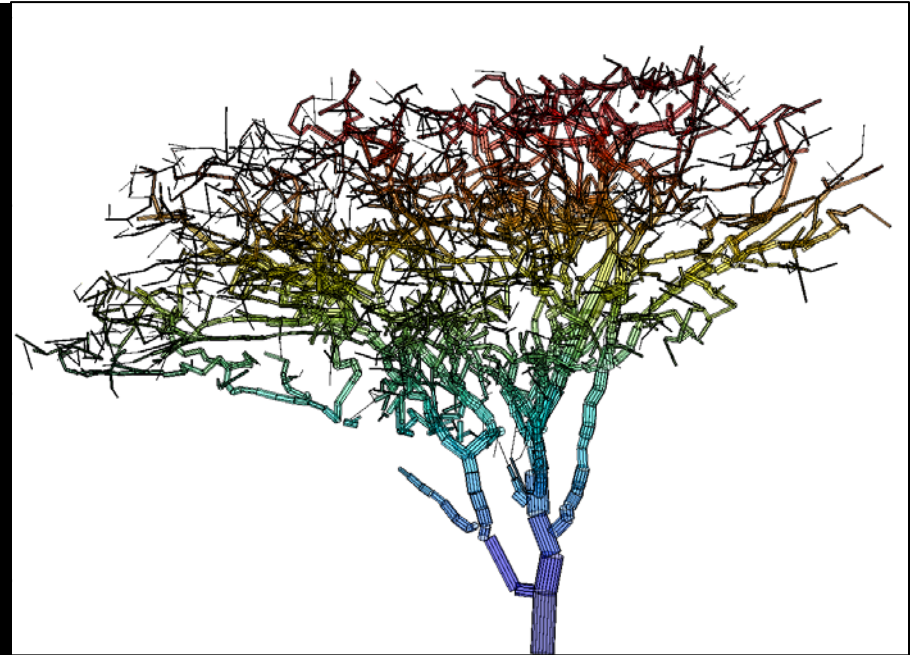
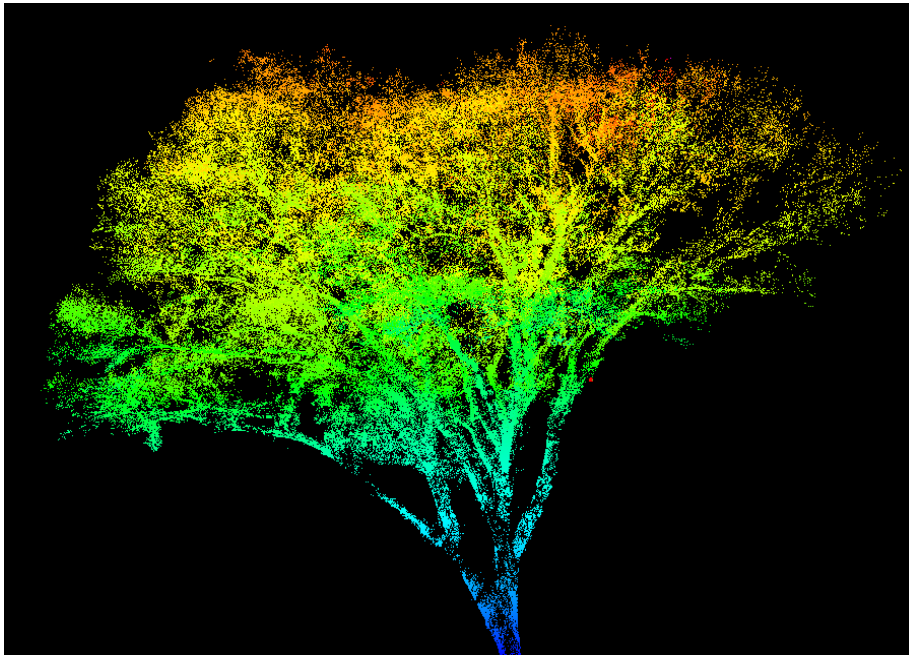
### ■ Accuracy and Bias in AGB from **TLS vs Allometry**:

- TLS: Slightly more accurate. Overestimation of 2.8 %
- Allometry: Less accurate. Underestimation of -0.1 to -16.2 %



# Results. TLS – 3D tree model in Tropical Forest

- Stems well reconstructed despite gaps in the cloud points and challenging shapes
- Crowns still overestimation due to low point density at tip of branches/ noise points from leaves (filter)

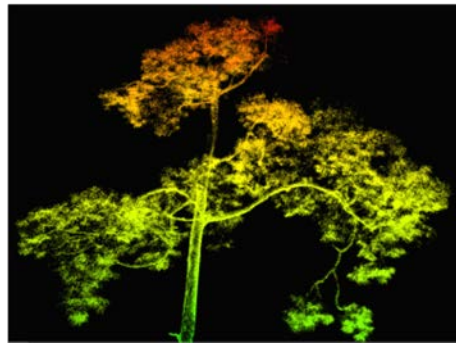


# On-going work

- Scaling up: data from 3 Selective logging field experiments across tropics (Peru, Indonesia, Guyana)



- 29 tropical trees harvested and measured





## Watch video animation:



<https://youtu.be/YnLihYyrNxc>

### For more information:

<http://www.wageningenur.nl/lidar>

Email : jose.tanago@wur.nl

Acknowledgements:  
field work team and  
forest concessionaires



**WAGENINGENUR**  
*For quality of life*

